

SEW Eurodrive:
FAF77DRN90S4 1.1kW N=11min-1 230V/400V

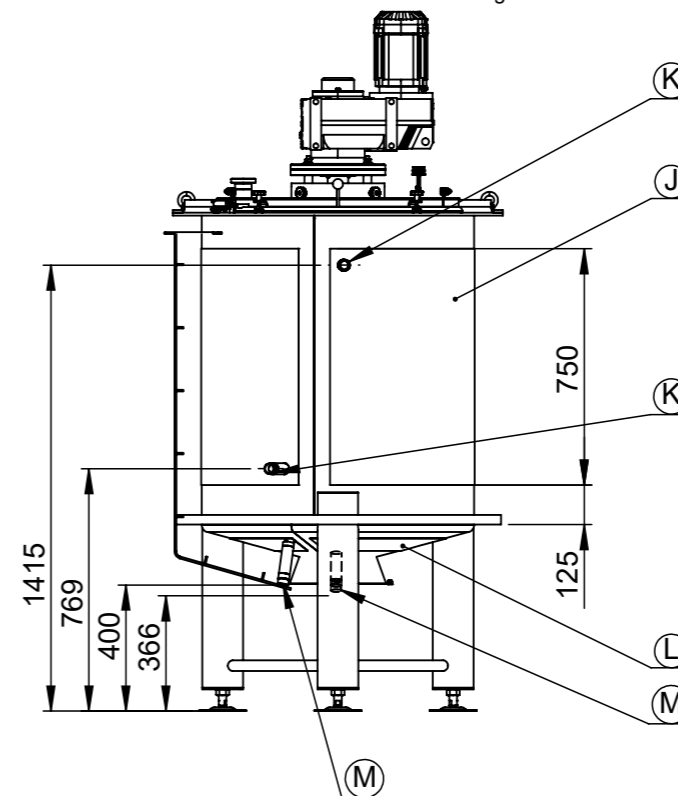
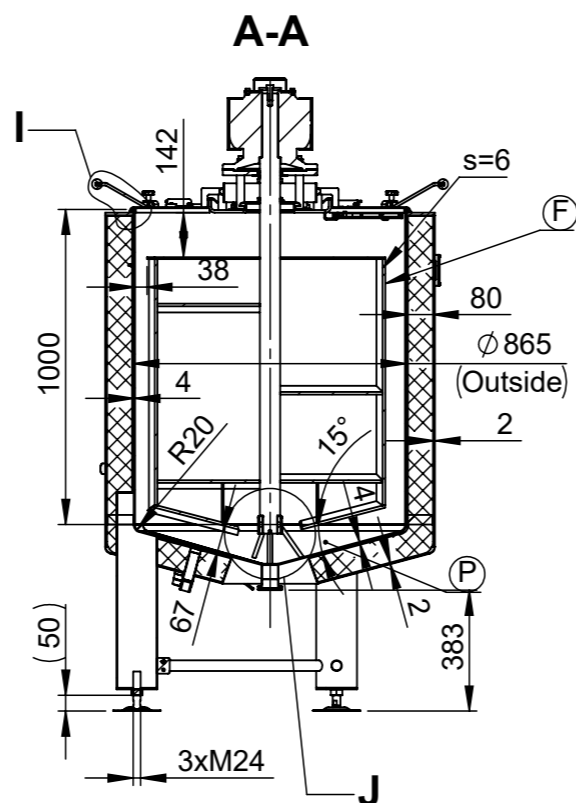
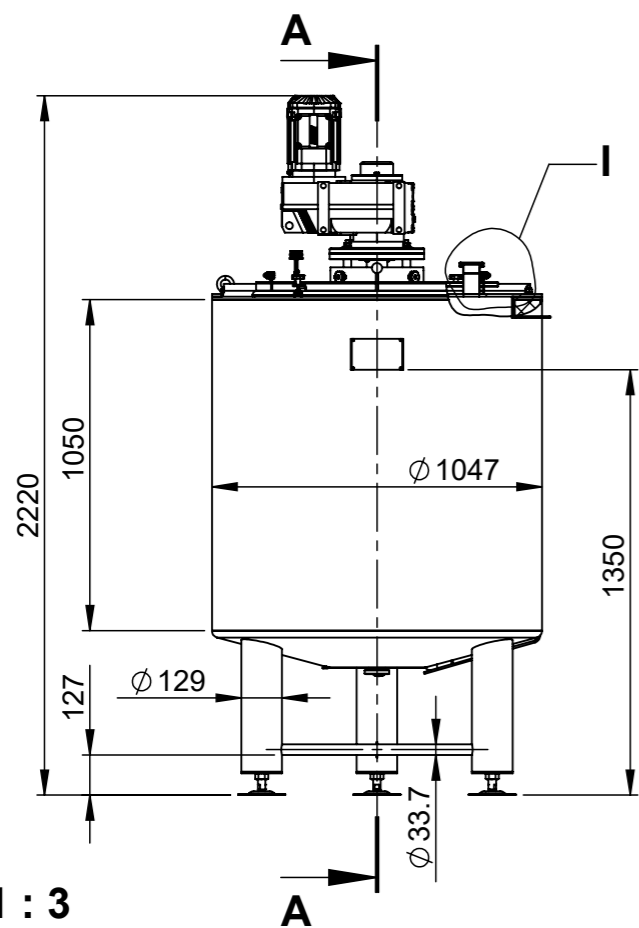


Behälter KG Bremen GmbH & Co.
Theodor-Barth-Str. 25
28307 Bremen - Germany
Tel. +49 (0) 421 34 85 114
E-Mail: mail@behaeltes-kg.de

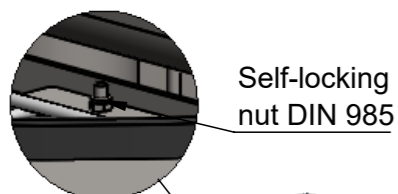
Revisions

Rev	Description	Zone	Date	Drawn	Checked
A	Added a ball handle on the lids.		16.07.21	Z.Z.	M.P.

On this view the insulation and the cladding are hidden

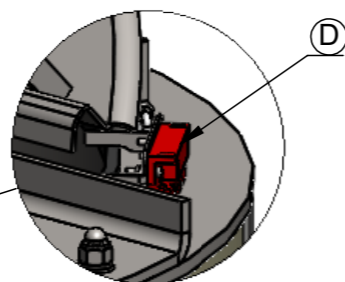


Q 1 : 3

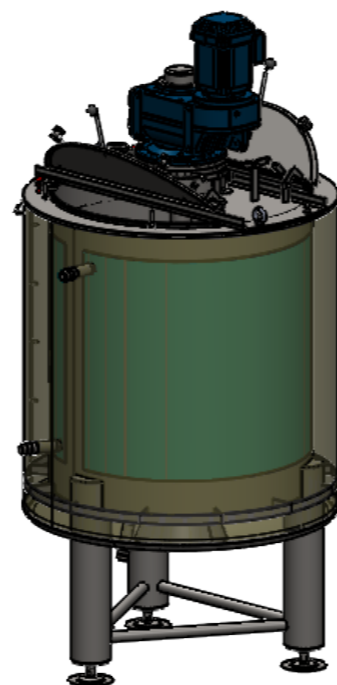
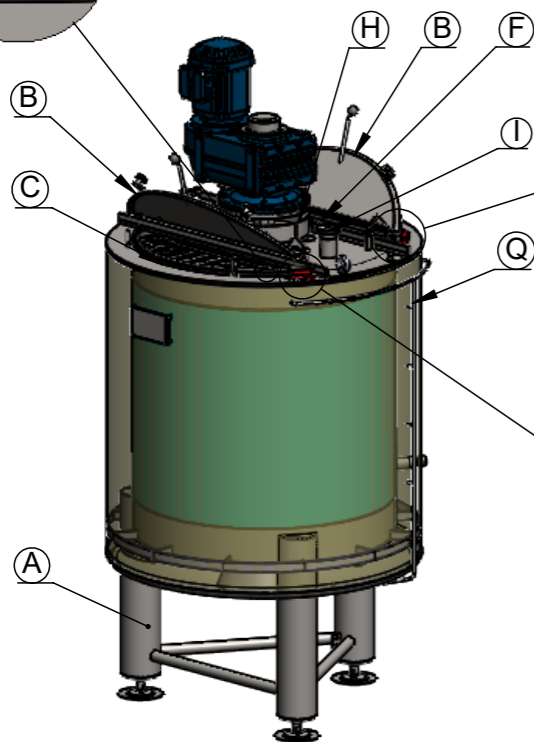
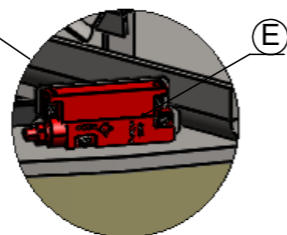


Self-locking
nut DIN 985

B 1 : 5



C 1 : 5



Поз. Item	Наименование Description	PN bar	DN mm.	Бр. Qty.
A	TUBULAR LEG ON ADJUSTABLE SUPPORT	-	-	3
B	1/2 HINGED LID 3mm- BRUSHED	atm.	-	2
C	SAFETY GRID 55X55/Φ5.0 ON 1/2 HINGED LID	atm.	-	1
D	SAFETY SWITCH ON 1/2 HINGED LID "ALLEN BRADLY" 440N-G02044	-	-	1
E	FRS 9 24V DC WITH 2.0m cables	-	-	1
F	SAFETY SWITCH ON SAFETY GRID "ALLEN BRADLY" 440N G02044 FRS	-	-	1
G	9 24V DC WITH 2.0m cables	-	-	1
H	GATE AGITATOR WITHOUT SCRAPERS 1.1kW / 11min-1	-	-	1
I	BEAM FOR AGITATOR WITH 4pcs. LASER CUT LIFTING LUGS	-	-	1
J	SAFETY SHIELD FOR GEARED MOTOR	-	-	1
K	INLET UP TO WELDING MALE DN50 DIN 11851	atm.	50	1
L	HEATING LASER-WELDED DIMPLE JACKET ON TANK SHELL F=2m2 / H=750mm / Pmax 5bar / Tmax 150°C *medium hot water/steam	0/5	G 1"	1
M	INLET/OUTLET JACKET ON TANK SHELL UP TO WELDING MALE NIPPLE G1"	0/5	G 1"	2
N	HEATING LASER-WELDED DIMPLE JACKET ON TANK BOTTOM F=0.3m2 / Pmax 5bar / Tmax 150°C *medium hot water/steam	0/5	G 1"	1
O	INLET/OUTLET JACKET ON TANK BOTTOM UP TO WELDING MALE NIPPLE G1"	0/5	G 1"	2
P	INLET G 1/2" FOR THERMOPROBE	atm.	G 1/2"	1
Q	PRODUCT OUTLET UP TO WELDING MALE DN50 DIN11851	atm.	50	1
	INSULATION MINERAL WOOL 80mm ON THE BOTTOM AND TANK SHELL WITH WELDED CLADDING MAT. 1.4307 (AISI 304L); 2J(BRUSHED)	-	-	1
	STAINLESS STEEL SUPPORT CONSTRUCTION FOR CABLES - AISI304 - ROUND BAR Φ6	-	-	1

Straightness, flatness and parallelism - EN 13920 F

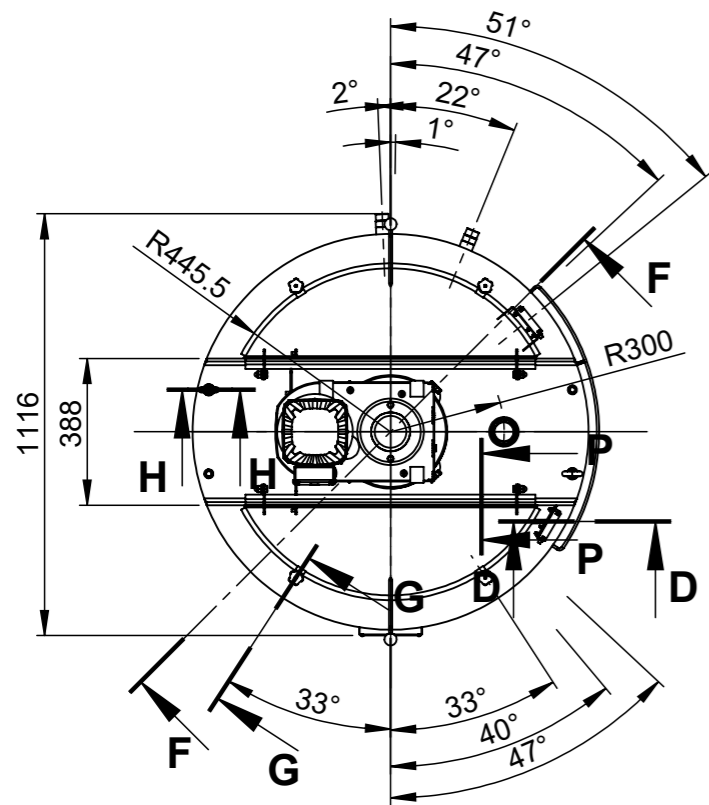
Linear dimensions - EN 13920 B

Surface	Outside	Brushed 2J	Weld. seams	Outside	Strip grinded 2x20 Ra<1,6
	Inside	Matt 2B		Inside	Flat grinded to Ra<0,8

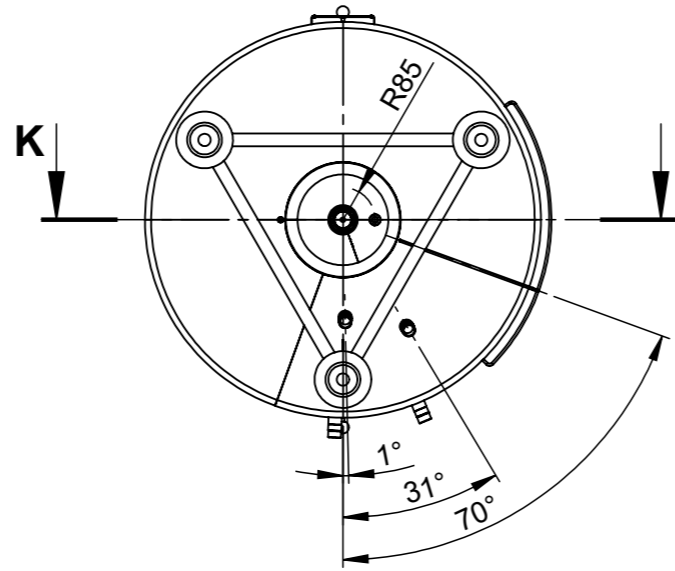
1.6	Drawn: Z.Z.	Scale 1:24	1.4307/ AISI 304L	12117101 WWG8719V4N ID19.642 - ID19.643
-----	----------------	---------------	----------------------	---

Checked: M.P.	TANK TYPE CHC-H12ILA-600L			
------------------	----------------------------------	--	--	--

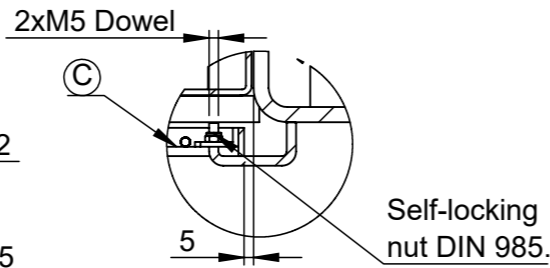
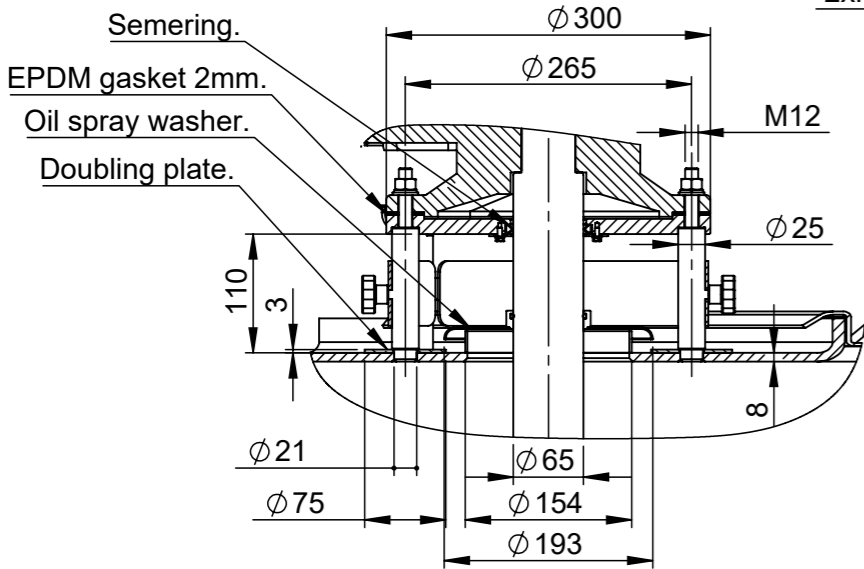
Approved: D.M.	Rev	16.7.2021 г.	Lang Eng	Sheet 1/2
-------------------	-----	--------------	-------------	--------------



F-F 1 : 7

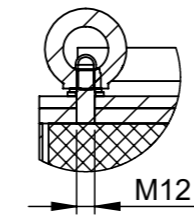


P-P 1 : 4

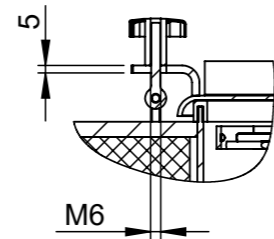


G-G 1 : 5

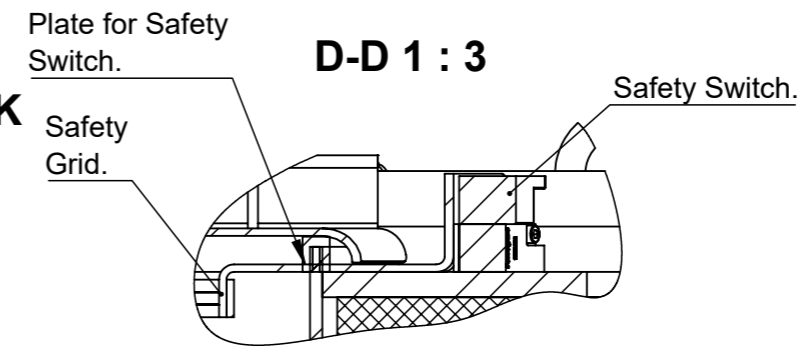
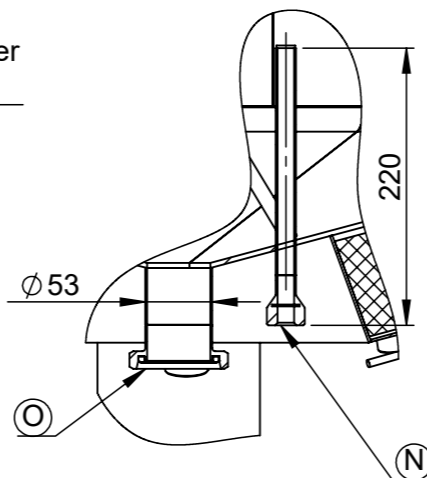
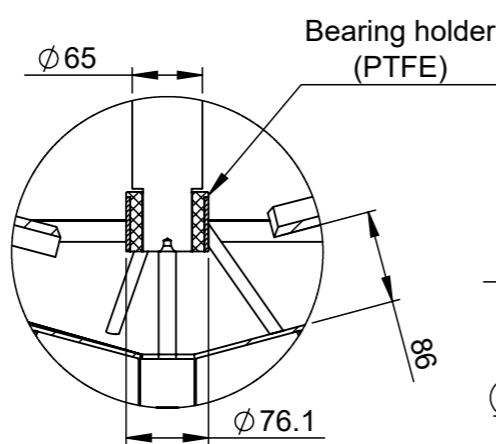
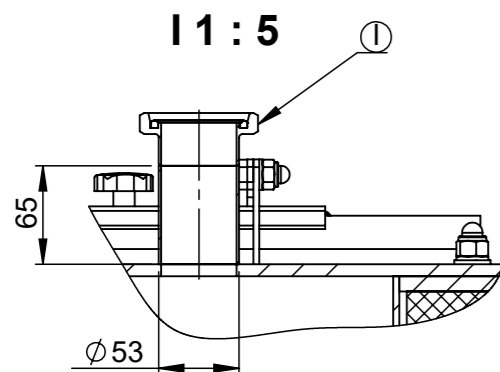
H-H 1 : 5



K-K 1 : 6

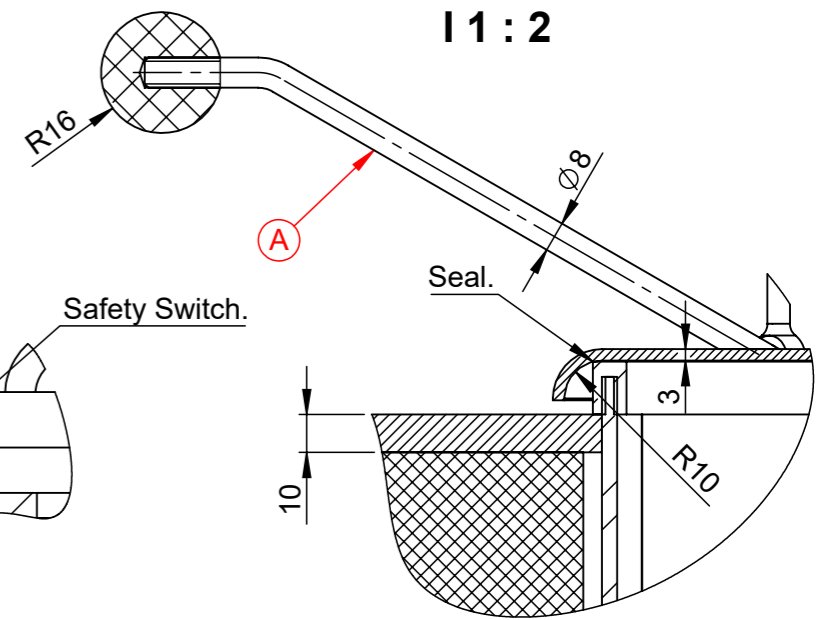


J 1 : 7



D-D 1 : 3

I 1 : 2



TANK TYPE CHC-H12ILA-600L			
Serial number	12117101-01	Stock nr.	WWG8719V4N / ID19.642
Geometrical volume	600 ℓ	Geometrical volume - jacket	4.1 ℓ
Working pressure	Atmospheric	Working pressure - jacket	0/5 bar
Working temperature	-10/100°C	Working temperature - jacket	-10/150°C
Maximum density	1.2kg/dm³	Jacket pressure drop	-
Tare mass	560 kg	Material	1.4307/ AISI 304L
Equipment output/voltage	1.1 kW/400V	Year of manufacture	2021

TANK TYPE CHC-H12ILA-600L			
Serial number	12117101-02	Stock nr.	WWG8719V4N / ID19.643
Geometrical volume	600 ℓ	Geometrical volume - jacket	4.1 ℓ
Working pressure	Atmospheric	Working pressure - jacket	0/5 bar
Working temperature	-10/100°C	Working temperature - jacket	-10/150°C
Maximum density	1.2kg/dm³	Jacket pressure drop	-
Tare mass	560 kg	Material	1.4307/ AISI 304L
Equipment output/voltage	1.1 kW/400V	Year of manufacture	2021

Straightness, flatness and parallelism - EN 13920 F			Linear dimensions - EN 13920 B		
Surface	Outside	Brushed 2J	Weld. seams	Outside	Strip grinded 2x20 Ra<1,6
	Inside	Matt 2B		Inside	Flat grinded to Ra<0,8
1.6	✓	✓	Scale	12117101 WWG8719V4N ID19.642 - ID19.643	
✓	✓	✓	Scale	1:24	
✓	✓	✓	Checked:	M.P.	
✓	✓	✓	Approved:	D.M.	
<small>Behälter KG Bremen GmbH & Co Theodor-Barth-Str. 25 28307 Bremen - Germany Tel.: +49 (0) 421 34 85 114 E-Mail: mail@behaelter-kg.de</small>			Rev	16.7.2021 r.	Lang Eng Sheet 2/2

TANK TYPE CHC-H12ILA-600L